

Regeneration made possible.

A guide to the LifeCell™ Tissue Process for
STRATTICE™ Reconstructive Tissue Matrix.



Not all processi

Maintaining graft integrity is essential to

Since 1994, LifeCell has been the pioneer and today is the market leader in the science of regenerative medicine. Our dedication to the science and characterization of tissue properties has enabled us to develop the LifeCell™ Tissue Process specifically designed to retain the critical biochemical and



1. Tissue Selection

Screening and selection of tissue for desired mechanical and handling properties



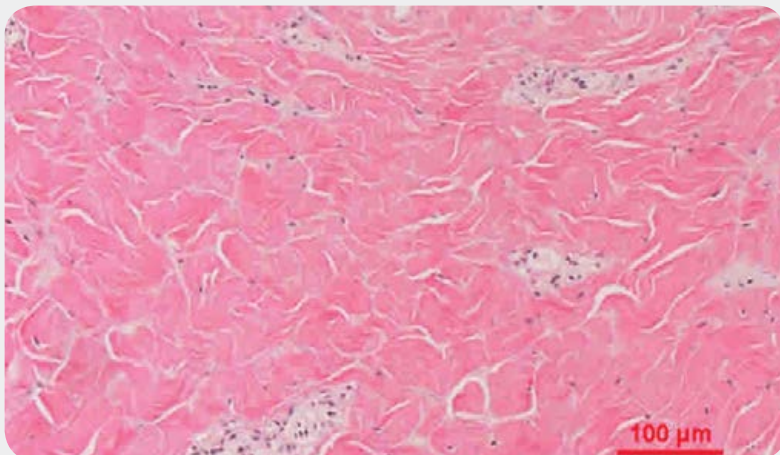
2. Dermis Isolation

Non-chemical based method with precision instrumentation that removes all non-dermal tissue **retaining the structural integrity of the matrix.**

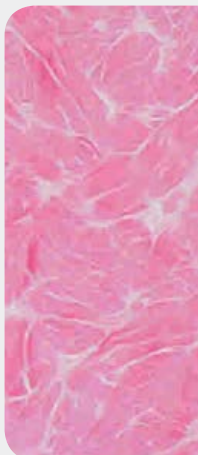


3. Microbial Neutralization

Proprietary process removes 99.99% of pathogens leading to a **less damaging sterilization process.***



Controlled Processing



The steps described in the LifeCell™ Tissue Process are scientifically designed to minimize damage to the structure of the tissue matrix. Damaged biologic materials have been shown to trigger inflammation that can lead to resorption and encapsulation, inhibiting the regenerative process.

*Data on file

ng is the same...

achieving successful biological outcomes

biomechanical integrity of the tissue, which is critical for regeneration. The end result is a biologically intact scaffold that supports tissue regeneration by allowing rapid revascularization, white cell migration and cell repopulation.



4. Decellularization & Enzyme Treatment

Maintains natural collagen structure while extracting porcine alpha-gal antigen as well as cellular and DNA components to **minimize the xenogeneic immune response.**



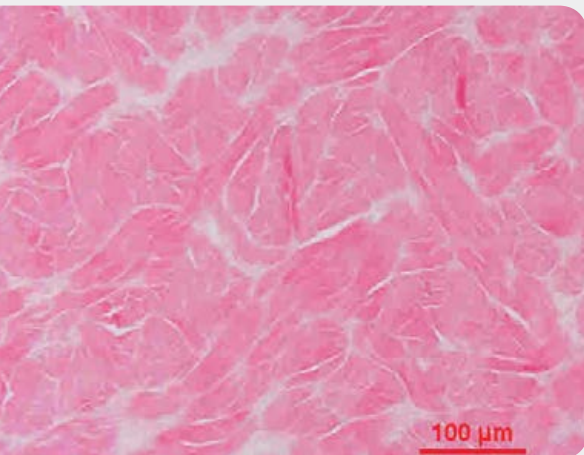
5. Matrix Preservation

Proprietary formula that stabilizes key matrix proteins and further protects the integrity of the acellular dermal matrix which enables a **platform for tissue regeneration.**



6. Sterilization

Optimized sterilization process designed to minimize free radical damage **preserving the regenerative properties of the acellular dermal matrix.**



Intact
ECM

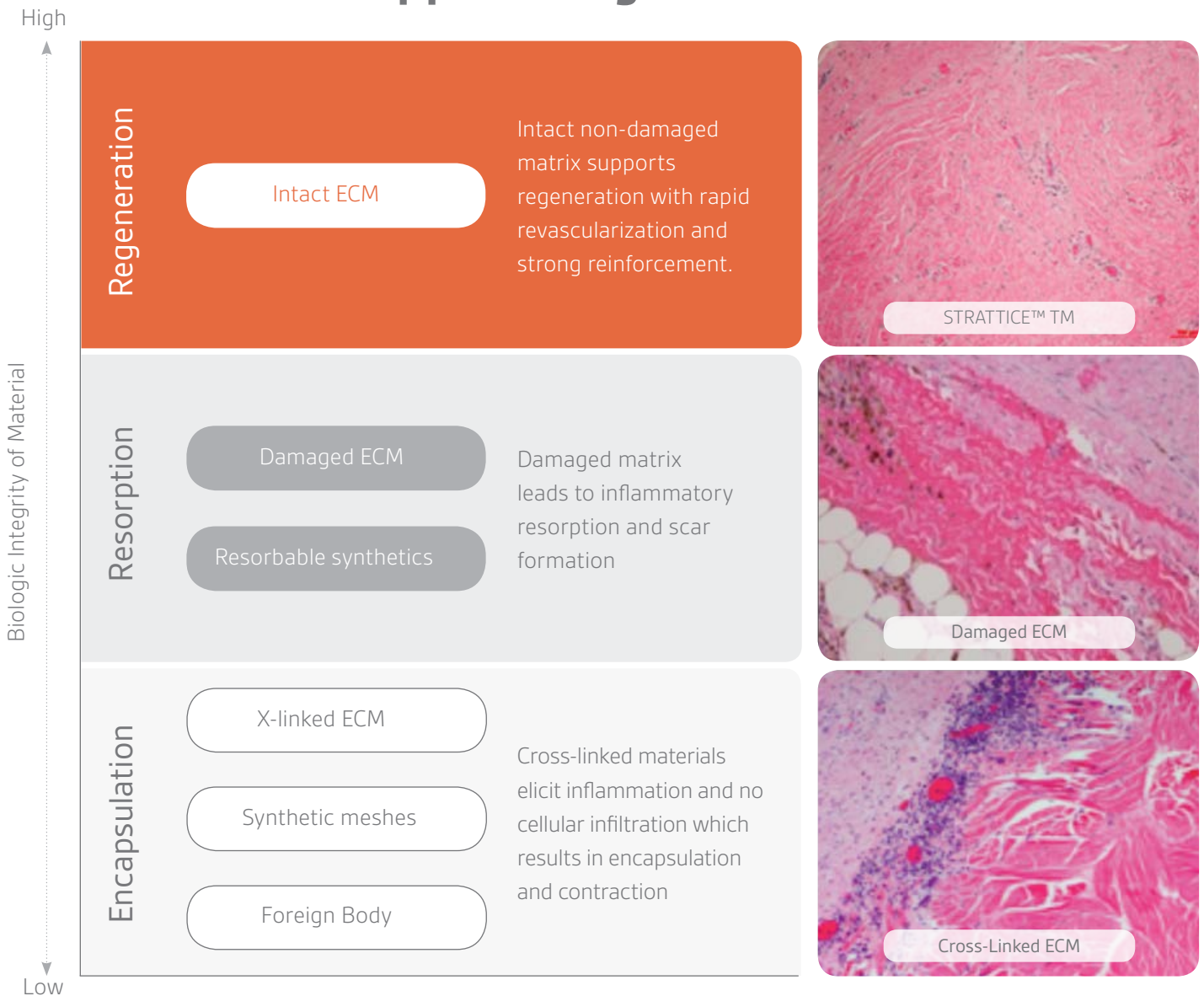
Regeneration

Unlike other processes, the end result of our proprietary process is a biologically intact scaffold that supports the regenerative process through:

- Cellular repopulation
- Revascularization
- Normal immune cell response

Not all biologics are the same...

Only an intact extracellular matrix supports regeneration*



*Data on file

Visit www.lifecell.com and contact your LifeCell representative for more information.

Before use, physicians should review all risk information, which can be found in the *Instructions for Use* attached to the packaging of each STRATTICE™ Tissue Matrix. Rx only.

CONTRAINDICATIONS: STRATTICE™ is derived from a porcine source and should not be used in patients with known sensitivity to porcine material, or in patients with a known sensitivity to Polysorbate 20.



LifeCell Corporation
 One Millennium Way
 Branchburg, NJ 08876
 Tel: 908.947.1100
 Fax: 908.947.1200
www.lifecell.com

LifeCell Customer Solutions
 800.367.5737

LifeCell Reimbursement Hotline
 888.543.3656
reimbursement@lifecell.com

