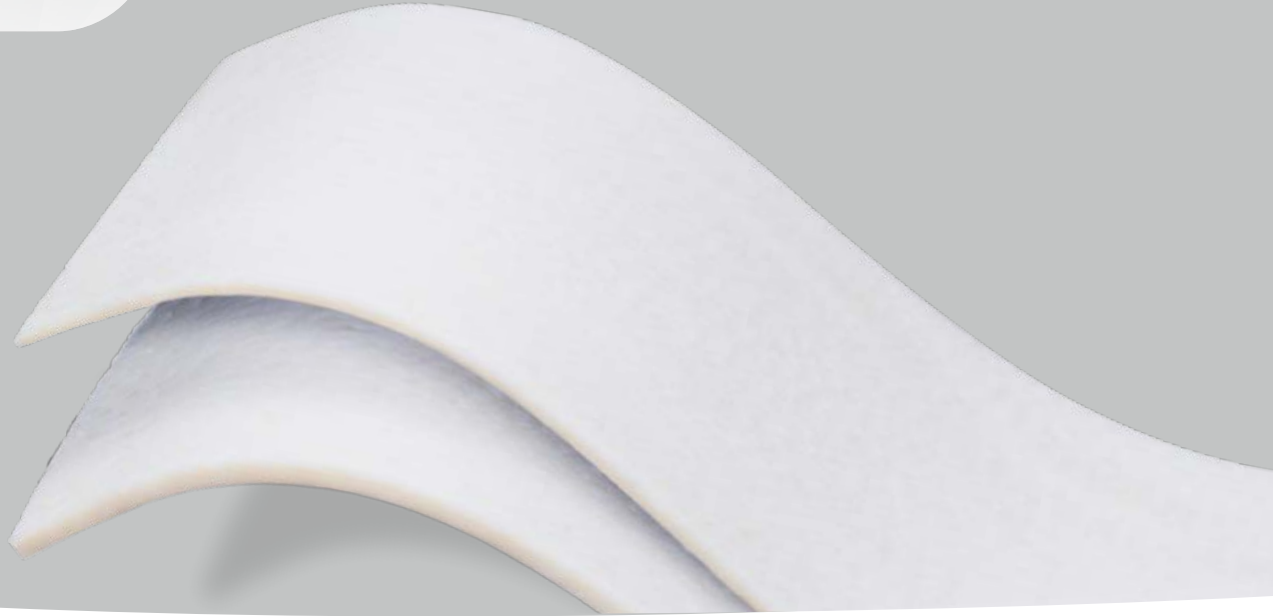


The proven benefits of the leading biological mesh.¹ Now available in
Extra Thick



Thicker*

- Made over **50% THICKER**
- Final out-of-package **thickness averages 2.5mm****



Stronger*

- **64% GREATER** out-of-package tensile strength**
- **51% GREATER** suture retention strength**



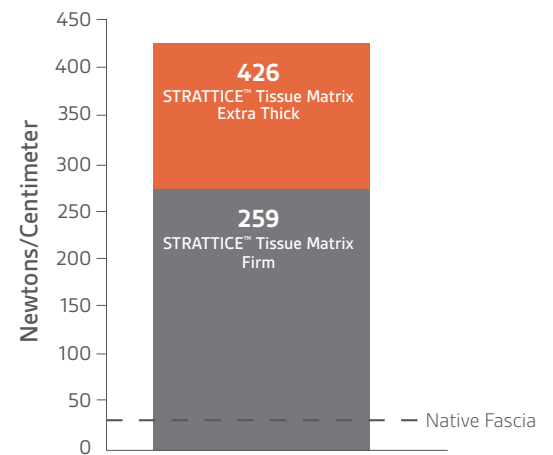
Proven

- The regenerative performance you expect from the leading biological mesh¹

*As compared to original STRATTICE™ Tissue Matrix

**Data on file; LifeCell Corporation

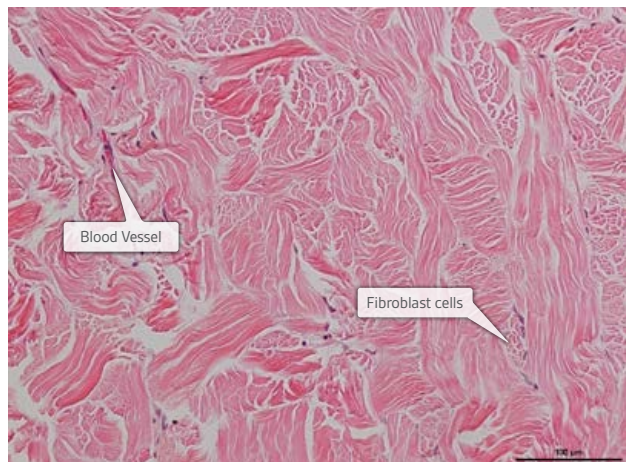
Out-of-Package Tensile Strength**



STRATTICE™ Tissue Matrix Extra Thick may be appropriate in complex abdominal wall reconstruction cases where surgeons desire increased thickness and tensile strength.

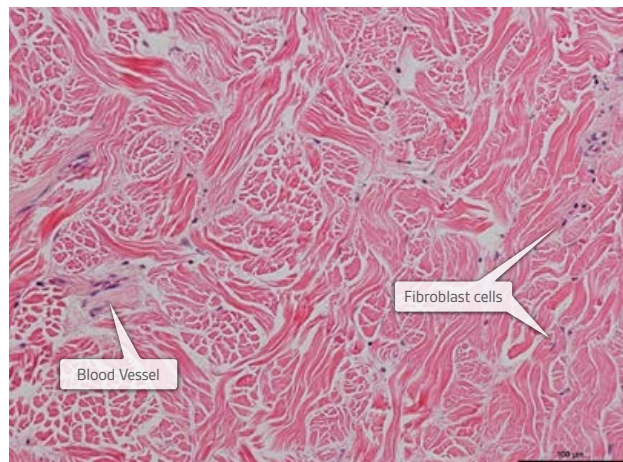
STRATTICE™ Tissue Matrix Extra Thick had the same biologic response as STRATTICE™ Tissue Matrix, as shown in an animal study.*†

Histology Photo of STRATTICE™ Tissue Matrix



H&E Stain 200x. One month explant in animal model.

Histology Photo of STRATTICE™ Tissue Matrix **Extra Thick**



H&E Stain 200x. One month explant in animal model.

*Correlation of these results to results in humans has not been established.

†Data on file; LifeCell Corporation

Ordering Information

Product Size	Product Code	Coverage (sq cm)
10x16	1016002ET	160
16x20	1620002ET	320
15x25	1525002ET	375
20x20	2020002ET	400
20x25	2025002ET	500
15x35	1535002ET	525
20x30	2030002ET	600
20x40	2040002ET	800
30x30	3030002ET	900
25x40	2540002ET	1000

STRATTICE™ RECONSTRUCTIVE TISSUE MATRIX REPLACEMENT GUARANTEE

The STRATTICE™ Replacement Guarantee program offers a replacement of any piece of STRATTICE™ Reconstructive Tissue Matrix when it has been used specifically for abdominal wall reconstructive applications at participating facilities.

Subject to certain terms and conditions, Acelity will replace STRATTICE™ Tissue Matrix Extra Thick purchased by the participating facility where it is explanted.

For more information, please call LifeCell Customer Solutions at **800-367-5737** or visit **acelity.com**.

Before use, physicians should review all risk information, which can be found in the *Instructions for Use* attached to the packaging of each STRATTICE™ Tissue Matrix. Rx only. CONTRAINDICATIONS: STRATTICE is derived from a porcine source and should not be used in patients with known sensitivity to porcine material, or in patients with a known sensitivity to Polysorbate 20.

References

1. Total Procedure Volumes of Biologics as reported by IMS CDM for Ventral/Incisional Procedures. December, 2015.

LifeCell Corporation: One Millennium Way | Branchburg, NJ 08876 | Tel: 908-947-1100 | Fax: 908-947-1200
Reimbursement Access Program, call 888-543-3656 or email LifeCell@ReimbursementAccess.com

Copyright 2016 LifeCell Corporation. All rights reserved. All trademarks designated herein are proprietary to LifeCell Corporation, its affiliates and/or licensors. MLC5403/6389/11-2016