

STRATTICE™

RECONSTRUCTIVE TISSUE MATRIX

PERFORATED

Artist's Rendering



Designed to allow **fluid to flow** through the matrix upon implantation while supporting **regeneration** in complex abdominal wall **reconstruction**

Introducing STRATTICE™ Reconstructive Tissue Matrix Perforated

STRATTICE™ Tissue Matrix Perforated combines the regenerative performance you have come to expect from STRATTICE™ Tissue Matrix, but is now perforated to help meet your surgical needs.



Fluid communication

Designed to allow fluid to move through the matrix at time of implantation.



Integration

Perforations facilitated tissue ingrowth as shown in a primate model.^{†,*}

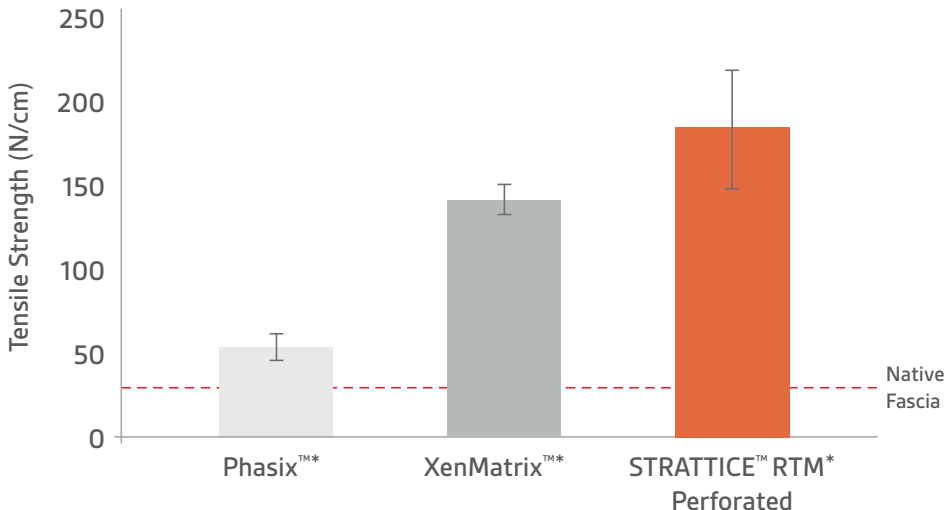


Strength

Perforation pattern designed to maintain similar strength to STRATTICE™ Tissue Matrix.

Out-of-Package Strength

Data representative of independent studies using same protocol*

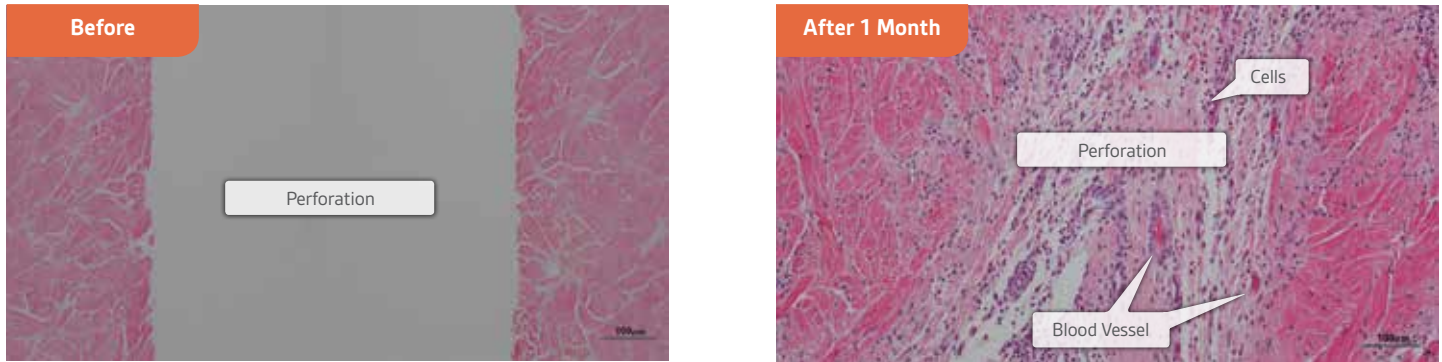


[†]Correlation of these results to results in humans has not been established.

*Data on file; LifeCell Corporation

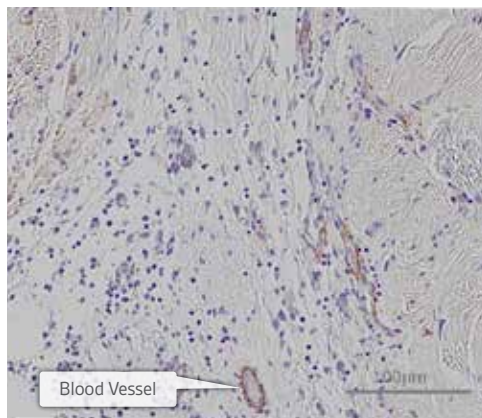
Cell Repopulation

Perforations Facilitated Tissue Ingrowth as Demonstrated in a Primate Model^{†,*}



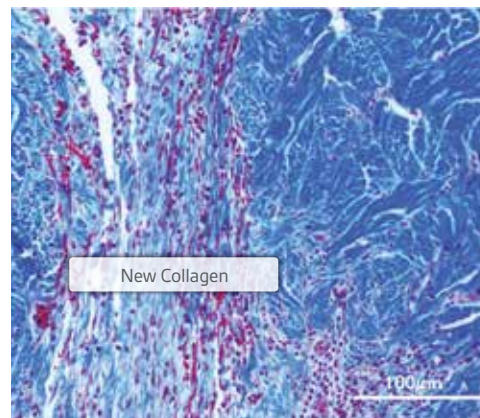
A post-hoc analysis revealed that cell repopulation more than **doubled** in areas adjacent to perforations, compared to areas within the central regions of the matrix.^{†,*}

Rapid Revascularization



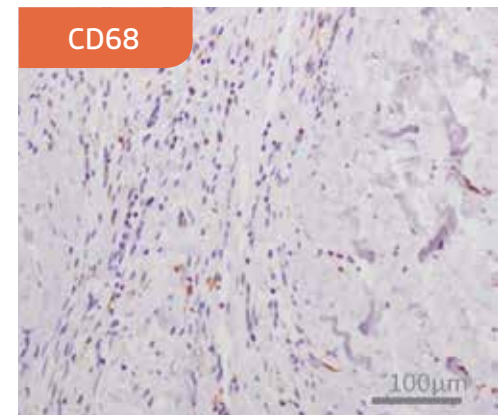
Smooth muscle α -actin (SMA) staining demonstrated the structure of blood vessels, but only minimal myofibroblast cells in the perforation, suggesting a lack of scar formation.^{†,*}

New Collagen Deposition



New collagen formation was demonstrated by Masson's Trichrome staining of the perforation.^{†,*}

Minimal Inflammation in Perforations



Minimal inflammation was detected in the perforations as shown by staining for macrophages (CD68).^{†,*}

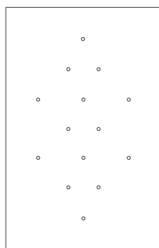
Note: histological analysis is post-hoc from primate animal study.

[†]Correlation of these results to results in humans has not been established.

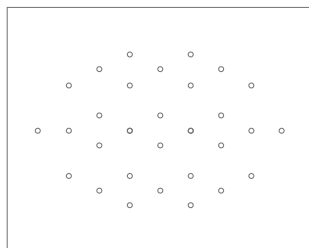
* Data on file; LifeCell Corporation.

Product Size	Product Code	Coverage (sq cm)
10 x 16cm	1016002P	160
10 x 20cm	1020002P	200
16 x 20cm	1620002P	320
20 x 20cm	2020002P	400
20 x 25cm	2025002P	500
15 x 35cm	1535002P	525
20 x 30cm	2030002P	600
20 x 40cm	2040002P	800
25 x 40cm	2540002P	1000

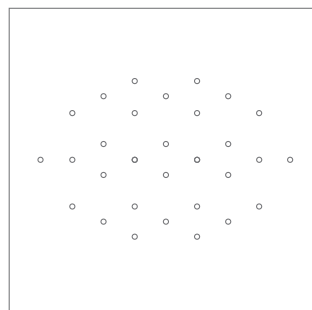
STRATTICE™ Reconstructive Tissue Matrix Perforated Patterns:



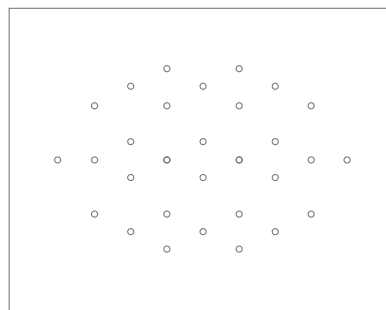
10 x 16 cm



16 x 20 cm



20 x 20 cm



20 x 25 cm

Illustrations not drawn to scale.

Essential Prescribing Information for STRATTICE™ Reconstructive Tissue Matrix Perforated

Indications for use

STRATTICE™ Reconstructive Tissue Matrix Perforated is intended for use as a soft tissue patch to reinforce soft tissue where weakness exists and for the surgical repair of damaged or ruptured soft tissue membranes. Indications for use include the repair of hernias and/or body wall defects which require the use of reinforcing or bridging material to obtain the desired surgical outcome.

STRATTICE™ Reconstructive Tissue Matrix Perforated is intended for single patient one-time use only.

Contraindications

- This device is derived from a porcine source and should not be used in patients with known sensitivity to porcine material.
- This device contains Polysorbate 20.

CAUTION: Federal (USA) law restricts this device to sale by or on the order of a physician.

WARNING

- Do not resterilize. Discard all open and unused portions of the device.
- Do not use if the package is opened or damaged. Do not use if seal is broken or compromised.
- After use, handle and dispose of all unused product and packaging in accordance with accepted medical practice and applicable local, state and federal laws and regulations.

Precautions

- Discard device if mishandling has caused possible damage or contamination, or the device is past its expiration date.
- Soak the device for a minimum of 2 minutes using a sterile basin and room temperature sterile saline or room temperature sterile lactated Ringer's solution to cover the mesh.
- Place device in maximum possible contact with healthy, well-vascularized tissue to promote cell ingrowth and tissue remodeling.
- STRATTICE™ Tissue Matrix should be hydrated and moist when the package is opened. If STRATTICE™ Tissue Matrix is dry, do not use.
- If a tissue punch-out piece is visible, remove using aseptic technique before implantation.

Storage

- STRATTICE™ Tissue Matrix is a sterile medical device that should be stored in a clean, dry location at room temperature.
- It is to be stored in its original packaging.
- Expiration date of the product is indicated as year (4 digits) and month (2 digits). The product expires after the last day of the month indicated.

For more information, please contact your LifeCell representative, or visit acelity.com.

LifeCell Corporation: One Millennium Way | Branchburg, NJ 08876 | Tel: 908-947-1100 | Fax: 908-947-1200
Reimbursement Access Program, call 888-543-3656 or email LifeCell@ReimbursementAccess.com

©2016 LifeCell Corporation, an Acelity Company. All rights reserved. STRATTICE is a trademark of LifeCell Corporation. MLC4521-R5/6072/8-2016